

LAGERPROGRAMM 4 stock range 4

MÖBELBESCHLÄGE furniture fittings



2013



2267-371ZN1



2231-66ZN1

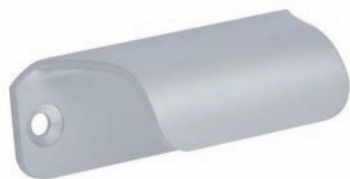
INHALT contents

Metall / metal	Seite / page 04 - 13
Kunststoff & Porzellan / plastic & porcelain	Seite / page 14 - 15
Holz / wood	Seite / page 16
Haken & Hakenleisten / hooks & hookrails	Seite / page 17 - 21
Sonderartikel / special articles	Seite / page 22 - 25
Artikelsuche / article index	Seite / page 26
Ausführungsbezeichnung / colour code	Seite / page 27



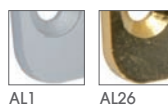
2279-18N1

1139



Bestellnummer / order no.

- 1139-60AL1
- 1139-60AL26
- 1139-90AL1
- 1139-90AL26
- 1139-120AL1
- 1139-120AL26



L	x	B	x	H	LA
60		20		27	50
90		25		27	80
120		27		27	110

Aluminium/aluminium

AL1

1140



Bestellnummer / order no.

- 1140-90PB8
- 1140-90ZN3
- 1140-116PB1
- 1140-116PB8
- 1140-116ZN3
- 1140-162PB8
- 1140-162ZN3
- 1140-200PB8
- 1140-200ZN3



L	x	B	x	H	LA
90		29		32	74x13
116		29		32	99x13
163		37		41	140x19
200		37		43	165x19

Stahlblech/sheet metal

ZN3

1349



Bestellnummer / order no.

- 1349-25ZN10



D	x	H
25		20

Druckguss/die cast

ZN10

1835



Bestellnummer / order no.

- 1835-68ZN31



L	x	B	x	H	LA
68		52		10	32

Druckguss/die cast

ZN31

2027



Bestellnummer / order no.

- 2027-140ZN1
- 2027-140ZN21
- 2027-140ZN63
- 2027-172ZN1
- 2027-172ZN21
- 2027-172ZN63
- 2027-204ZN1
- 2027-204ZN21
- 2027-204ZN63



L	x	B	x	H	LA
140		9		30	128
172		9		30	160
204		9		30	192

Druckguss/die cast

ZN63



2157



Druckguss/die cast

ZN63

Bestellnummer / order no.
2157-161ZN63



ZN63

L	x	B	x	H	LA
161		20		27	128

2161



Stahl - Druckguss/steel - die cast

PB12ZN1

Bestellnummer / order no.
2161-108PB12ZN1
2161-108PB12ZN21
2161-140PB12ZN1
2161-140PB12ZN21
2161-172ZN21ZN1
2161-332ZN21ZN1



PB12ZN1 PB12ZN21 ZN21ZN1

L	x	B	x	H	LA
108		16		37	96
140		16		37	128
172		16		37	160
332		16		37	320

2182



Druckguss/die cast

ZN63

Bestellnummer / order no.
2182-118ZN1
2182-118ZN21
2182-118ZN63
2182-182ZN1
2182-182ZN21
2182-182ZN63
2182-342ZN1
2182-342ZN21



ZN1 ZN21 ZN63

L	x	B	x	H	LA
118		8		33	96
182		8		33	160
342		8		33	320

2198



Druckguss/die cast

ZN63

Bestellnummer / order no.
2198-173ZN1
2198-173ZN21
2198-173ZN63
2198-333ZN1
2198-333ZN21
2198-333ZN63



ZN1 ZN21 ZN63

L	x	B	x	H	LA
173		12		31	160
333		12		31	320

2204



Druckguss/die cast

ZN60

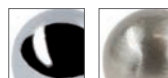
Bestellnummer / order no.
2204-68ZN60



ZN60

L	x	B	x	H	LA
68		40		10	32

2205



ZN1 ZN21

Bestellnummer / order no.
2205-11ZN1
2205-11ZN21

D x H
12 x 25

Druckguss/die cast

ZN21

2206



ZN1 ZN21

Bestellnummer / order no.
2206-116ZN1
2206-116ZN21

L x B x H LA
117 x 14 x 20 96

Druckguss/die cast

ZN1

2231

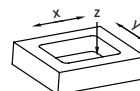


ZN1 ZN21

Bestellnummer / order no.
2231-66ZN1
2231-66ZN21

L x B x H
66 x 13 x 4(13)

waagrecht und senkrecht verwendbar/
for horizontal and vertical use



x = 63mm
y = 10mm
z = 13mm

Druckguss/die cast

ZN1

2238



ZN1 ZN21

Bestellnummer / order no.
2238-252ZN1
2238-252ZN21
2238-284ZN1
2238-284ZN21
2238-316ZN1
2238-316ZN21
2238-348ZN1
2238-348ZN21
2238-604ZN1
2238-604ZN21
2238-764ZN1
2238-764ZN21

L x B x H LA
252 x 11 x 32 128/224
284 x 11 x 32 160/256
316 x 11 x 32 192/288
348 x 11 x 32 224/320
604 x 11 x 32 480/576
764 x 11 x 32 640/736

Aluminium/aluminium

ZN1

2261



Druckguss/die cast

Bestellnummer / order no.
2261-138ZN21



ZN21

L	x	B	x	H	LA
138		16		26	94,5

ZN21

2262



Druckguss/die cast

Bestellnummer / order no.
2262-110ZN10



ZN10

L	x	B	x	H	LA
110		18		21	96

ZN10

2266



Druckguss/die cast

Bestellnummer / order no.
2266-145ZN1
2266-145ZN21
2266-209ZN1
2266-209ZN21
2266-337ZN1
2266-337ZN21



ZN1



ZN21

L	x	B	x	H	LA
145		15		30	128
209		15		30	192
337		15		30	320

ZN1

2267



Druckguss/die cast

Bestellnummer / order no.
2267-211ZN1
2267-211ZN21
2267-371ZN1
2267-371ZN21



ZN1



ZN21

L	x	B	x	H	LA
210		10		34	160
370		10		34	320

ZN1

2284



Druckguss/die cast

Bestellnummer / order no.
2284-72ZN1
2284-72ZN4
2284-72ZN21



ZN1



ZN4



ZN21

L	x	B	x	H	LA
72		72		31	64

ZN4

2285



Druckguss/die cast



ZN4

Bestellnummer / order no.
2285-169ZN4

L	x	B	x	H	LA
169		20		29	160

ZN4



1403



Bestellnummer / order no.

- 1403-15N1
- 1403-20N1
- 1403-24N1
- 1403-29N1



N1

D	x	H
15		20
20		24
24		29
29		35

Edelstahl/stainless steel

N1

1404



Bestellnummer / order no.

- 1404-10N1
- 1404-15N1
- 1404-18N1
- 1404-21N1
- 1404-30N1



N1

D	x	H
10		21
15		22
18		24
21		26
30		31

Edelstahl/stainless steel

N1

2275



Bestellnummer / order no.

- 2275-16N1
- 2275-20N1
- 2275-23N1



N1

D	x	H
16		19
20		24
23		28

Edelstahl/stainless steel

N1

2277



Bestellnummer / order no.

- 2277-10N1
- 2277-15N1



N1

L	x	B	x	H
10		10		22
15		15		25

Edelstahl/stainless steel

N1

2279



Bestellnummer / order no.

- 2279-18N1



N1

D	x	H
18		15

Edelstahl/stainless steel

N1

2280



Edelstahl/stainless steel

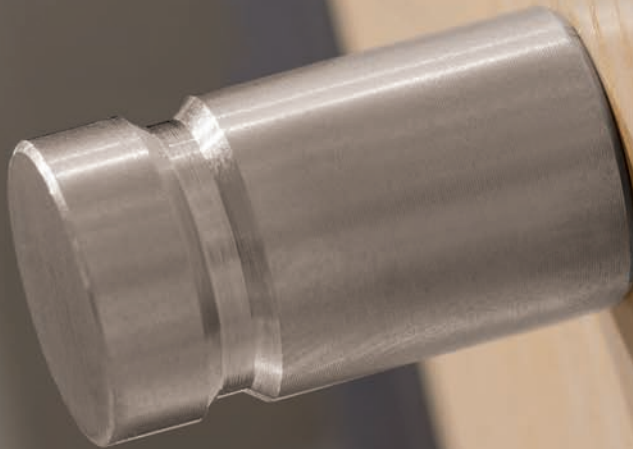


N1

Bestellnummer / order no.
2280-10N1
2280-14N1

D	x	H
10		25
14		25

N1



2291



Edelstahl/stainless steel

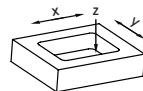
Bestellnummer / order no.

- 2291-50N1
- 2291-100N1
- 2291-145N1
- 2291-210N1



N1

L	x	B	x	H
50		50		1,5(13)
100		50		1,5(13)
145		50		1,5(13)
210		50		1,5(13)



x = 37/90/135/200mm
y = 38/38/38/38mm
z = 13/13/13/13mm

N1

2292



Edelstahl/stainless steel

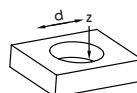
Bestellnummer / order no.

- 2292-40N1
- 2292-50N1
- 2292-80N1



N1

D	x	H
39		2(13)
51		2(12)
80		2(14)



d = 30/40/62mm
z = 13/12/14mm

N1

2293



Edelstahl/stainless steel

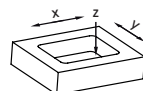
Bestellnummer / order no.

- 2293-175N1



N1

L	x	B	x	H
175		60		3(16)



x = 154mm
y = 40mm
z = 16mm

N1



2294



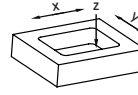
Edelstahl/stainless steel

Bestellnummer / order no.
2294-130N1



N1

L	x	B	x	H
130		37		3(10)



x = 95mm
y = 30mm
z = 10mm

N1

2266-209ZN1



0391



Kunststoff/plastic



MV7MC23

Bestellnummer / order no.
0391-34MV7MC23

D x H
34 x 27

Weitere Größen und Ausführungen finden Sie in unserem Hauptlagerkatalog auf Seite 160, 171/
For further dimensions and colours see our main stock range catalogue page no. 160, 171

_____ MV7MC23

0653



Kunststoff/plastic



MC23MV7

Bestellnummer / order no.
0653-139MC23MV7

L x B x H LA
139 x 18 x 33 96

Weitere Größen und Ausführungen finden Sie in unserem Hauptlagerkatalog auf Seite 167, 196, 198, 200, 203, 205, 206, 207, 212, 213/
For further dimensions and colours see our main stock range catalogue page no. 167, 196, 198, 200, 203, 205, 206, 207, 212, 213/

_____ MC23MV7

H144



Kunststoff/plastic



A68

Bestellnummer / order no.
H144-36A68

L x B x H
36 x 36 x 21

_____ A68

SP54



Porzellan/porcelain



PF10



PF11



PF30

Bestellnummer / order no.
SP54-27PF10
SP54-27PF11
SP54-27PF30

D x H
27 x 32

_____ PF30

SP55



Porzellan/porcelain



PF12



PF31

Bestellnummer / order no.
SP55-35PF12
SP55-35PF31

D x H
35 x 32

_____ PF31

SP59



Porzellan/porcelain



PF16

PF32

PF33

Bestellnummer / order no.
SP59-29PF16
SP59-29PF32
SP59-29PF33

D	x	H
29		32

PF33

SP60



Porzellan/porcelain



SP

Bestellnummer / order no.
SP60-38

D	x	H
39		27

SP



S87A



Holz/wood

Bestellnummer / order no.

- S87A-30HZ5
- S87A-30HZ11
- S87A-30HZ17
- S87A-35HZ5
- S87A-35HZ11
- S87A-35HZ17
- S87A-35HZ21
- S87A-44HZ5
- S87A-44HZ11
- S87A-44HZ17
- S87A-44HZ21



HZ5 HZ11 HZ17 HZ21

D	x	H
30		26
35		27
44		29

mit 3mm Bohrung/with drilling 3mm

HZ11

S653A



Holz/wood

Bestellnummer / order no.

- S653A-15HZ34HZ61
- S653A-64HZ34HZ61
- S653A-96HZ34HZ61
- S653A-128HZ34HZ61



HZ34HZ61

L	x	B	x	H	LA
15		12		25	
64		12		25	32
96		12		25	64
128		12		25	96

mit 3mm Bohrung/with drilling 3mm

HZ34HZ61



2255



Edelstahl/stainless steel

Bestellnummer / order no.

2255-220N1V1E
2255-380N1V1E



N1

L	x	B	x	H	LA
220		150		50	196
380		150		50	356

L 220 = 3 Haken/hooks
L 380 = 5 Haken/hooks

N1

2256



Edelstahl/stainless steel

Bestellnummer / order no.

2256-220N1V1E
2256-300N1V1E
2256-380N1V1E



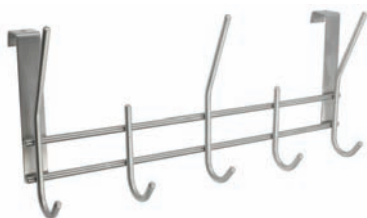
N1

L	x	B	x	H	LA
220		80		50	196
300		80		50	276
380		80		50	356

L 220 = 3 Haken/hooks
L 300 = 4 Haken/hooks
L 380 = 5 Haken/hooks

N1

2257



Edelstahl/stainless steel

Bestellnummer / order no.

2257-340N1V1E



N1

L	x	B	x	H
340		151		66

17mm Tür/door

N1

2258



Edelstahl/stainless steel

Bestellnummer / order no.

2258/N1



N1

L	x	B	x	H	LA
179		77		65	32

N1

2259



Edelstahl/stainless steel

Bestellnummer / order no.

2259/N1



N1

L	x	B	x	H	LA
101		77		39	32

N1

2226



Stahl/steel



ZN1BD18

Bestellnummer / order no.
2226-255ZN1BD18V1B

L	x	B	x	H	LA
255		94		17	240

Hakenleiste mit 4 Stk. Einlegedekore/
hookrail with 4 pcs. decore inserts

ZN1BD18

2227



Druckguss/die



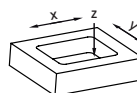
ZN1



ZN21

Bestellnummer / order no.
2227-177ZN1
2227-177ZN21

L	x	B	x	H	x	LA
177		13		6(13)		64



x = 174mm
y = 10mm
z = 13mm

ZN21



2227



Druckguss/die cast

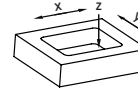
ZN21

Bestellnummer / order no.
2227-93ZN1
2227-93ZN21



ZN1 ZN21

L	x	B	x	H
93		13		6(13)



x = 90mm
y = 10mm
z = 13mm

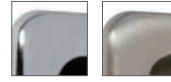
2231



Druckguss/die cast

ZN1

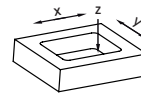
Bestellnummer / order no.
2231-66ZN1
2231-66ZN21



ZN1 ZN21

L	x	B	x	H
66		13		4(13)

waagrecht und senkrecht verwendbar/
for horizontal and vertical use



x = 63mm
y = 10mm
z = 13mm



2106



Edelstahl/stainless steel



Bestellnummer / order no.

2106-27N1
2106-42N1
2106-62N1

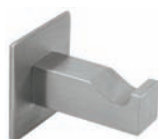


N1

L	x	B	x	H
38		35		27
38		35		42
38		35		62

N1

2282



Edelstahl/stainless steel



Bestellnummer / order no.

2282-42N1
2282-62N1



N1

L	x	B	x	H
35		35		42
35		35		62

N1

2283



Edelstahl/stainless steel



N1

Bestellnummer / order no.

2283-42N1

D	x	H
35		42

N1

2286



Edelstahl/stainless steel



N1

Bestellnummer / order no.

2286-32N1

L	x	B	x	H	LA
42		64		32	28

N1

2287



Druckguss/die cast



ZN1

ZN21

Bestellnummer / order no.

2287/ZN1
2287/ZN21

D	x	H
18		53

ZN1

H206



A3ZN1

Bestellnummer / order no.
H206/A3ZN1V1B

L	x	B	x	H
2080		25		37

für Türen von 1900 - 2080mm Höhe / for doors from 1900 - 2080mm height
Haken höhenverstellbar / hook height adjustable

Kunststoff/plastic

A3ZN1

S668



HZ69

Bestellnummer / order no.
S668-480HZ69V1P

L	x	B	x	H	LA
480		26		36	420

Holz/wood

HZ69



920



Druckguss/die cast



ZN2

Bestellnummer / order no.
920-28ZN2V4*

D x H
28 x 19

*Set zu 4 Stk. im Polybeutel/
Set of 4 pcs. in a polybag

ZN2

930



Druckguss/die cast



ZN2

Bestellnummer / order no.
930-114ZN2V3*

L x B x H x LA
114 x 10 x 31 x 96

*Set zu 3 Stk. im Polybeutel/
Set of 3 pcs. in a polybag

ZN2

930



Druckguss/die cast



ZN2

Bestellnummer / order no.
930-149ZN2V3*

L x B x H x LA
148 x 10 x 31 x 128

*Set zu 3 Stk. im Polybeutel/
Set of 3 pcs. in a polybag

ZN2

6175



Druckguss/die cast



ZN2



ZN4

Bestellnummer / order no.
6175-104ZN2V3*
6175-104ZN4V3*

L x B x H x LA
104 x 8 x 27 x 96

*Set zu 3 Stk. im Polybeutel/
Set of 3 pcs. in a polybag

ZN2

6175



Druckguss/die cast



ZN2



ZN4

Bestellnummer / order no.
6175-136ZN2V3*
6175-136ZN4V3*

L x B x H x LA
136 x 8 x 27 x 128

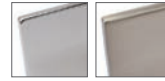
*Set zu 3 Stk. im Polybeutel/
Set of 3 pcs. in a polybag

ZN4

2197



Druckguss/die cast



ZN1 ZN21

Bestellnummer / order no.
2197-214ZN1V4S*
2197-214ZN21V4S*

L	x	B	x	H	x	LA
214		10		30		128

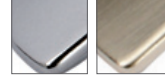
*Bestellnr. für 4 Stück/
order no. for 4 pieces

ZN1

2200



Druckguss/die cast



ZN1 ZN21

Bestellnummer / order no.
2200-184ZN1V5S*
2200-184ZN21V5S*

L	x	B	x	H	x	LA
184		23		25		128

*Bestellnr. für 5 Stück/
order no. for 5 pieces

ZN1



2210



Druckguss/die cast



ZN21

Bestellnummer / order no.
2210-150ZN21V5S*

L	x	B	x	H	x	LA
150		9		28		128

*Bestellnr. für 5 Stück/
order no. for 5 pieces

ZN21

2211



Druckguss/die cast



ZN21

Bestellnummer / order no.
2211-202ZN21V5S*

L	x	B	x	H	x	LA
202		9		28		160

*Bestellnr. für 5 Stück/
order no. for 5 pieces

ZN21

605



Druckguss/die cast



PB1



ZN1



ZN5



ZN10+

Bestellnummer / order no.
605-210PB1
605-210ZN1
605-210ZN5
605-210ZN10+

L	x	B	x	H	x	LA
81		41		204		64

Kleiderlüfter/clothes ventilator

PB1

2233



Druckguss - Stahl/die cast - steel



ZN1

Bestellnummer / order no.
2233-422ZN1V1K

L	x	B	x	H	x	LA
422		28		22		398

Krawattenhalter/ tie rack

ZN1

2234

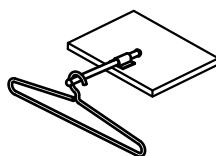


Aluminium - Kunststoff/aluminium - plastic

Bestellnummer / order no.
2234-235AL2A3V1K



AL2A3



L	x	B	x	H	x	LA
235		44		18		27/33

Kleiderlüfter/clothes ventilator

AL2A3

H207



Kunststoff - Stahl/plastic - steel



A3A4

Bestellnummer / order no.
H207-394A3A4V1BK

L	x	B	x	H
394		25		21

Krawattenhalter - selbstklebend / tie rack - self adhesive

A3A4





2157-161ZN63

ARTIKELSUCHE article index

<u>Art.No</u>	<u>Seite/page</u>	<u>Art.No</u>	<u>Seite/page</u>	<u>Art.No</u>	<u>Seite/page</u>
0391	14	2210	24	2283	20
0653	14	2211	24	2284	08
605	24	2226	18	2285	09
920	22	2227	18/19	2286	20
930	22	2231	07/19	2287	20
1139	04	2233	24	2291	12
1140	04	2234	24	2292	12
1349	04	2238	07	2293	12
1403	10	2255	17	2294	13
1404	10	2256	17	6175	22
1835	04	2257	17	H144	14
2027	04	2258	17	H206	21
2106	20	2259	17	H207	25
2157	06	2261	08	S87A	16
2161	06	2262	08	S653A	16
2182	06	2266	08	S668	21
2197	23	2267	08	SP54	14
2198	06	2275	10	SP55	14
2200	23	2277	10	SP59	15
2204	06	2279	10	SP60	15
2205	07	2280	11		
2206	07	2282	20		

AUSFÜHRUNGSBEZEICHNUNG colour code

A Kunststoff / plastic

A3	schwarz / black
A4	weiß / white
A37	weiß-schwarz / white-black
A68	weiß-gelb / white-yellow

AL Aluminium-eloxiert / aluminium-anodized

AL1	naturfärbig matt / natural mat
AL2	naturfärbig chemisch gegläntzt / naturally brightened
AL26	goldfärbig matt / gold mat

BD Kunststoff-Bilddekor / plastic picture decor

BD18	Ghettoblaster-Schmetterling-Fußball-weiß/ ghettoblaster-butterfly-football-white
------	---

HZ Holz / wood

HZ5	Kiefer roh / pine natural
HZ11	Esche roh / ash natural
HZ17	Buche roh / beech natural
HZ21	Buche weiß lackiert / beech white lacquered
HZ34	Ahorn natur lackiert / maple clear lacquered
HZ61	Mahagoni natur lackiert / mahogany clear lacquered
HZ69	Eiche birkenrindenfärbig / oak birch bark coloured

MC Kunststoff-metallic / plastic-metallic

MC23	lila / purple
------	---------------

MV Kunststoff-metallic velour / plastic-metallic velour

MV7	Nickel / nickel
-----	-----------------

N Edeltahl / stainless steel

N1	Edeltahl fein geschliffen / finely brushed stainless steel
----	--

PB Metall-pulverbeschichtet / metal - powder coated

PB1	reinweiß / white RAL 9010
PB8	schwarz / black RAL 9005
PB12	schwarz matt / black mat RAL 9005

PF Porzellan-färbig / porcelain-coloured

PF10	multicolour mit Streifen / multicolour with stripes
PF11	multicolour mit Punkten / multicolour with points
PF12	orange-grün gepunktet / orange-green pointed
PF16	rosa-grün / pink-green
PF30	weiß-dunkelblau gestreift / white-dark blue striped
PF31	multicolor weiß-blau-grün / multicolour white-blue-green
PF32	weiß-blau gestreift / white-blue striped
PF33	multicolour orange mit Blumen / multicolour orange with flowers

ZN Druckguss / die cast galvanized

ZN1	glänzend verchromt / bright chrome
ZN2	matt verchromt / mat chrome
ZN3	glänzend vernickelt / bright nickel
ZN4	matt vernickelt / mat nickel
ZN5	glänzend vermessingt / bright brass
ZN10	altmessingfärbig brüniert getrommelt / antique brass trumbled
ZN10+	altmessingfärbig brüniert gebürstet / antique brass brushed
ZN21	vernickelt feingeschliffen / satin nickel plated
ZN31	altmessingfärbig brüniert gebürstet / antique brass brushed
ZN60	altmessingfärbig gebürstet braun / antique brass brushed brown
ZN63	alt-eisenfärbig / scrap iron coloured

LAGERPROGRAMM 4 stock range 4

2013

5000 Artikel sofort lieferbar ab Lager. Mindestbestellmenge 1VE
5000 items in stock available for prompt delivery. Minimum order is 1 sales unit



SIRO Möbelbeschläge GmbH ■ Spielfeldstrasse 12 ■ A-4452 Ternberg
Telefon: +43 (0) 7256 6020 - 0 ■ Fax: +43 (0) 7256 8932
e-mail: office@siro.at ■ www.siro.cc